

# NPS Newsletter

## Noumea Public School

*A newsletter for the community of Noumea Public School, built on Dharug land.*

Noumea St

Shalvey NSW 2770

T 9628 7777

F 9628 1572

Term 3 Week 4

6 August 2015

### From our Principal

We are almost half way through Term Three and Stage Three camp is fast approaching. If you could complete any outstanding payments as soon as possible, we will be able to make the final arrangements. The weather has been sunny recently yet still very cold, so make sure your child packs some warm clothes.

Year Two are heading off to Rouse Hill Farm next week to experience what life was like in the past. They will be dressed up in old attire and practice writing on slate boards in the classroom. It sounds like a lot of fun so we hope the weather will be kind to us and they also enjoy a sunny day.

Mr Lewis and Mrs Ernest took 18 students to participate in The Royce Simmonds Shield on Tuesday. Both teams played extremely well with one team coming fourth in their draw and the other making it to the grand final and only missing out by two points. They proudly displayed their medals and both teams behaviour and sportsmanship was impressive.

We have also had environmental workshops and pet ownership programs being run by the council across the school and Book Week is fast approaching so have those costumes ready.

There will be a large shipping container in the staff carpark in the coming weeks that will support the workers who are replacing all of the school light fittings to make them more efficient and sustainable. Please refrain from using the carpark at this time as visibility will be limited due to the container. Students should always be entering the school via the front gate pathway and not through the carpark particularly during this time.

Kind Regards,

Mrs Sue Finn  
Principal

### Spelling Bee

On Monday 27 July, twenty-four students from Stages 2 and 3 competed in the school final of the Premier's Spelling Bee. After many difficult rounds of spelling in front of students, teachers and parents the winners were announced. Congratulations to Brody Ball and Noah Reid from Stage 2 and to Ocean Iosia and Sabrina Vaafusuaga from Stage 3. These students will go on to represent our school at the regional final in Week 9 of this term.

### Coming Events

#### 12 August 2015

Year 2 Rouse Hill Excursion

~~~

#### 13 August 2015

Whole School Assembly

~~~

#### 20 August 2015

Group Photo Day

~~~

#### 24 to 28 August

Book Week

~~~

#### 27 August 2015

Book Parade

~~~

#### 1 to 3 September 2015

Stage 3 Camp

~~~

### 2015 Term Dates

Term 1	Wed 28 Jan - Thurs 2 April
Term 2	Tues 21 April - Fri 26 June
Term 3	Tues 14 July - Fri 18 Sept
Term 4	Tues 6 Oct - Wed 16 Dec

### Office Hours

Monday - Friday  
8:30am - 3:00pm

Premier's Spelling Bee Stage 2



Premier's Spelling Bee Stage 3



Premier's Spelling Bee Winners





IT'S BACK!!!! WOOLWORTHS EARN & LEARN STARTED ON Wednesday 15 July and continues until Tuesday 8 September.

When you shop at Woolworths you can collect Woolworths Earn & Learn Stickers from the checkout operator and place them on a Woolworths Earn & Learn Sticker Sheet (available at school). There will be one Woolworths Earn & Learn Sticker for every \$10 spent (excluding liquor, tobacco and gift cards). Once completed simply place the Sticker Sheet in the collection box located in the school foyer.

You can download more Woolworths Earn & Learn Sticker Sheets from the website [woolworths.com.au/earnandlearn](http://woolworths.com.au/earnandlearn)

This program gives schools and Early Learning Centres around Australia the chance to earn new educational resources.

### Book Fair 2015

Throughout Education Week a book fair was held in the library. Students had the opportunity to purchase books from Central Book Supplies and help the library raise funds to go towards book prizes for the end of year assembly.

Thanks to the generous support of our school community we were able to select \$250 worth of commission books. A very special mention should also be given to Mr King (Stacey Goldsbrough's grandfather) who very kindly donated \$70 towards the purchase of presentation Day book prizes.

### School Attendance

*Did you know? If a student misses as little as 8 days in each school term, by the end of primary school they'll have missed over a year of school. Education for your child is important and regular attendance at school is essential for your child to achieve their educational best and increase their career and life options. NSW public schools work in partnership with parents to encourage and support regular attendance of children and young people. When your child attends school every day, learning becomes easier and your child will build and maintain friendships with other children.*

### What are parents' legal responsibilities?

Education in New South Wales is compulsory for all children between the ages of six years and below the minimum school leaving age. The Education Act 1990 requires that parents ensure their children of compulsory school age are enrolled at, and regularly attend school, or, are registered with the Board of Studies, Teaching and Educational Standards for home schooling. Once enrolled, children are required to attend school each day it is open for students.

### Why is arriving on time so important?

- \*Ensures that students do not miss out on important learning activities scheduled early in the day
- \*Helps students learn the importance of punctuality and routine and reduces classroom disruption
- \*Gives students time to greet their friends before class

Lateness is recorded as a partial absence and must be explained by parents.

**What if my child has to be away from school?** On occasion, your child may need to be absent from school. Justified reasons for student absences may include:

- being sick, or having an infectious disease
- having an unavoidable medical appointment
- being required to attend a recognised religious holiday
- exceptional or urgent family circumstance (e.g. attending a funeral)

Following an absence from school you must ensure that **within 7 days** you provide your child's teacher with a verbal or written explanation for the absence. However, if the school has not received an explanation from you within 2 days, the school may contact you to discuss the absence and take further action if it is recurring.

**What about travel?** Families are encouraged to travel during school holidays. If travel during school term is necessary, this must be discussed with Mrs Finn . An Application for Extended Leave may need to be completed. Absences relating to travel will be marked as leave on the roll and therefore contribute to your child's total ab-sences for the year. In some circumstances students may be eligible to enrol in distance education for travel periods over 50 school days.

**Do you need to know more?** <http://www.schools.nsw.edu.au/media/downloads/schoolsweb>

**Book Parade**

On **Thursday 27 August**, we will be holding a **Book Parade** to help celebrate Book Week 2015. This year, the parade will coincide with a **Book Week Art Show** in the hall and a **picnic recess** at the end of the parade.

The theme of this year's Book Week is "Books Light up Our World". All students K-6 are invited to come to school dressed in either light themed costumes or as their favourite character from a book. A parade will be held under the school COLA at 10:30 am so that students have an opportunity to share their costumes.

Parents are also invited to come and watch the parade (fancy dress is optional), followed by a picnic recess with their children in the playground.

We are looking forward to seeing all princesses, pirates, Harry Potters, monsters and friends on the day.

For further details please contact Ms Dunn or Mrs McNally

**2015 NOUMEA PUBLIC SCHOOL ATHLETICS CARNIVAL**

Our Athletics Carnival held last Tuesday was a huge success, even though it was very chilly!

All students participated extremely well, displaying great effort and sportsmanship. Congratulations!

Mr Lewis will soon notify the 8-12 year old students who have qualified for the district carnival.

Ribbons will be presented at the next Whole School Assembly in Week 5.

A huge thank you to all the parents who gave up their time to come and cheer on the students, also, to all staff for helping out at the carnival.



Mr Marc Lewis  
Sports Coordinator

**MT DRUITT ROYCE SIMMONS SHIELD RUNNERS-UP**

Congratulations to Noumea Public School for being Mt Druitt Royce Simmons Shield `2015 Runners-Up

The boys went through the tournament undefeated through the qualifying rounds but unfortunately fell to Bidwill in the final by 2 points.

A special thanks to Mrs Ernest and the parents who helped with transport students to and from the ground, and braved the weather to come out and support the team. Without your help these activities would not be offered to our students.



Mr Lewis  
Rugby League Coach

### Sports and Group Photo Day

*Advancedlife Photography* will be returning to Noumea Public School on **Thursday 20 August** to take our group and PSSA team photos. Once the photos have been processed they will be displayed at school for ordering.

Please ensure that your child is at school, in full school uniform, on the day of the photos. Some dance groups and PSSA teams will get changed into their costumes and sporting gear on the day, before their photos are taken.

Photos to be taken are:

- Year Six Group photo
- Captains and Prefects
- House Captains
- SRC
- Choir
- PSSA Rugby League/ Netball
- Multicultural Group
- Aboriginal Dance Groups (K-2 and 3-6)
- Junior Dance Group

Further information about the ordering of photos will be given once the photos are on display and ready for purchasing.

### Transition

We are now accepting Kindergarten enrolment applications for 2016. If you or a friend has a child who turns five before the 31 July 2016, now is the time to enrol. Contact the office for an enrolment form.

Our transition to school program 'Noumea New Stars' is beginning next term. These sessions will take place on the following dates:

- Monday 12 October – 10-11am
- Monday 19 October – 9-10:30am
- Monday 26 October – 9-10:30am
- Monday 2 November – 9-10:30am
- Monday 9 November – 9-11am (Orientation session)

Parents will also have the opportunity to participate in a variety of workshops during these times. Enrolment forms must be completed for children to participate in the transition program.

Our Kindergarten 2016 Orientation Day will be on Monday 9 November from 9-11am.

This week with your newsletter you will have received two flyers for our transition to school program. Please pass these onto neighbours or friends.

If you are able to hand these flyers out into the community, please let Mr Allen or Miss King know.

### TEA & TALK @ TWO-THIRTY

Our Wednesday afternoon Tea & Talk is back on again.

Next Wednesday 12th August

Mr Jeffress will interview Miss Alicia Davies who is class teacher for 3D this year.

Then Wednesday 19th August

we will interview our new Instructional Leader, Mrs Christie Absalom, who looks after Mathematics across the whole school.

All welcome to come along and hear what these members of staff are doing for our students. Also we give an update on what is happening around our school. As usual, refreshments are provided.



# ROAD SAFETY FACT SHEET

## Penalties from 1 July 2015



This Fact Sheet provides an overview of some of the penalties that apply to illegal parking on all roads in **School Zones**

**If you stop in a 'No Stopping' area**  
- Fine from \$319 + 2 demerit points



You must not stop your vehicle on a length of road or in an area in which a No Stopping sign applies.

No Stopping includes when the vehicle is not moving but the engine is still running.

**If you disobey a 'No Parking' sign**  
- Fine from \$177 + 2 demerit points



You are allowed to stop your vehicle only to set down or pick up passengers, or goods.

Your vehicle must not stop for more than 2 minutes. The driver must not be more than 3 metres from the vehicle.

**If you stop on or near a 'Pedestrian Crossing'** - Fine from \$425 + 2 demerit points

You must not stop or park your vehicle or near a pedestrian crossing to drop people off or pick them up.

**If you are Double Parked** - Fine from \$319 + 2 demerit points

You must not stop your vehicle or park in the middle of the road to drop people off or pick them up. Always stop or park legally and safely at the edge of the road or in a parking area.

**If you stop in a 'Bus Zone'**  
- Fine from \$319 + 2 demerit points



You must not stop or park your vehicle in a bus zone for any reason.

This includes when the vehicle is not moving but the engine is still running.

**A 'Kiss & Ride' area is always within a 'No Parking' zone. The 'No Parking' rules apply to all 'Kiss & Ride' areas.**  
- Fine from \$177 + 2 demerit points



You are allowed to stop your vehicle only to set down or pick up passengers, or goods.

Your vehicle must not stop for more than 2 minutes. The driver must not be more than 3 metres from the vehicle.

**When you obey the parking rules, it makes it easier to see what pedestrians are doing.**

**More information over the page**

For more information contact the Blacktown City Council on 9839 6000

RSOFS302-15

**If you block access to a ramp, path or passageway** - Fine from \$106

You must not stop or park your vehicle where it stops people using a pram ramp, footpath or passageway. This includes when you are queuing around a corner while waiting to pick up someone from the school.

**If you stop on or across a driveway or block access to a property** - Fine from \$177 + 2 demerit points

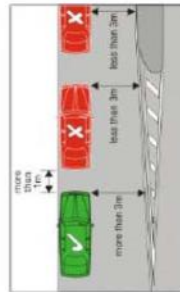
You must not stop or park your vehicle on or across a driveway, or block access to a property.

**If you stop on a footpath or nature strip**  
- Fine from \$177 + 2 demerit points

You must not stop or park your vehicle on a footpath or nature strip in a built up area. This includes stopping with two wheels on the road and two on the path or nature strip.

**If you park too close to the road dividing line or strip** - Fine from \$248

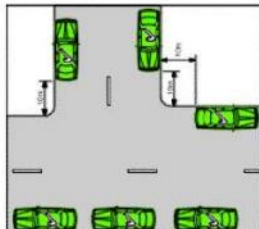
You must not stop or park your vehicle within 3 metres of the continuous dividing line or dividing strip unless a sign allows you to park there.



**If you stop in, on or near an intersection** - Fine from \$248

Unless a sign allows you to park there, you must not stop or park your vehicle:

- within 20 metres of an intersecting road at an intersection with traffic lights.
- within 10 metres of an intersecting road at an intersection without traffic lights including roundabouts.



**There are many more parking rules that could affect you. For more information see the RMS website [www.myrta.com](http://www.myrta.com)**

For more information contact the Blacktown City Council on 9839 6000

RSOFS302-15

